



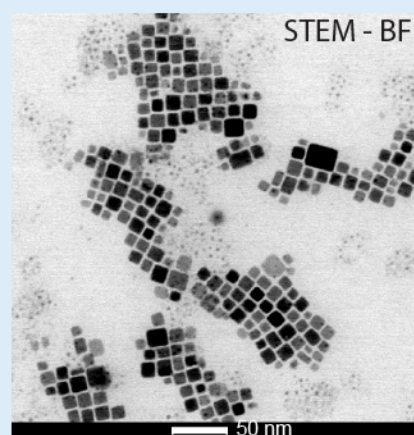
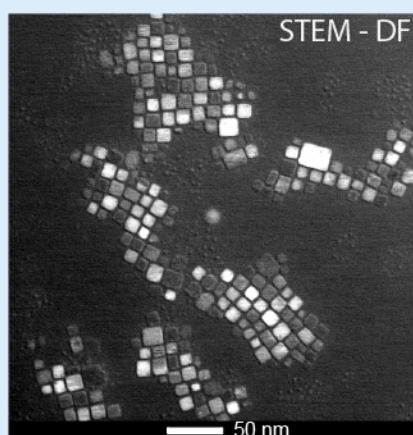
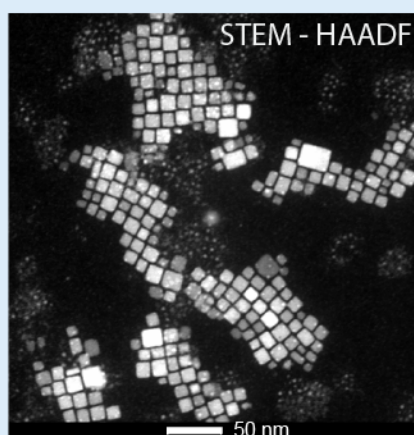
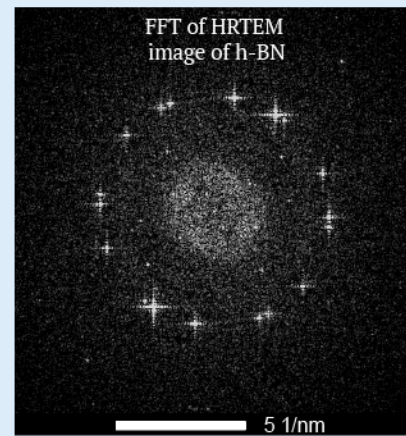
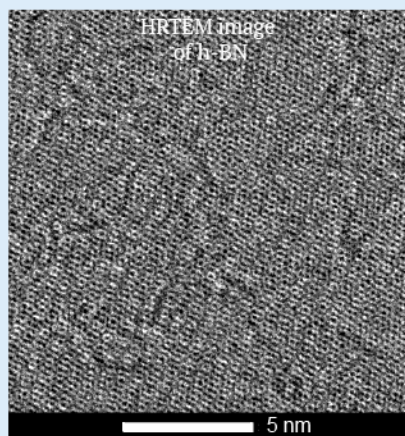
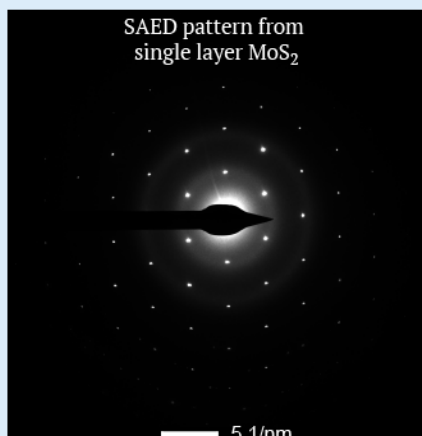
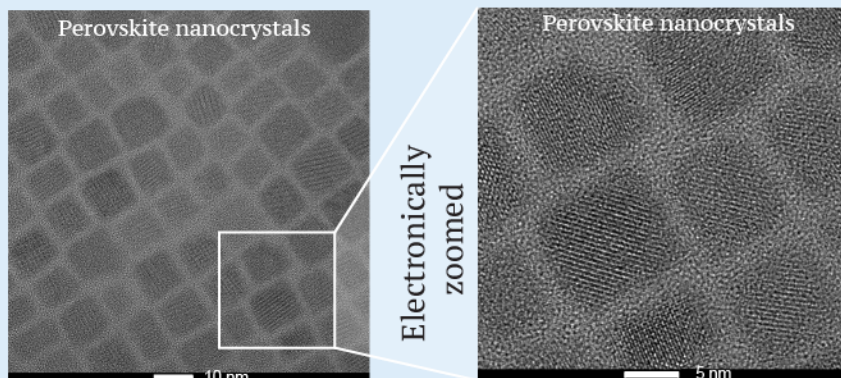
TEM Facility@CeNS

TALOS F200S G2 (200 kV, FEG, CMOS Camera 4K x 4K,
In column EDS detector, STEM)

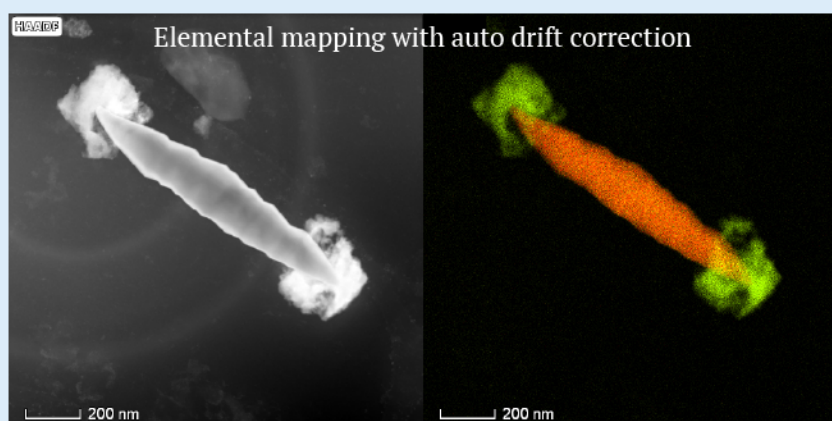
Main Features

- Bright Field (BF)
- Dark Field (DF)
- Electron Diffraction (ED)
- Scanning Transmission Electron Microscope (STEM)
- Elemental Mapping

HRTEM Resolution = 0.16 nm



Images of CsPbBr₃ nanocrystals collected simultaneously in STEM mode with three detectors



Fast data collection with In-column detector

To know more details and access please contact:

templab@cens.res.in

The facility is located at
Centre for Nano and Soft Matter Sciences
Survey - 7, Shivanapura
Neelamangla, Bengaluru North 562123